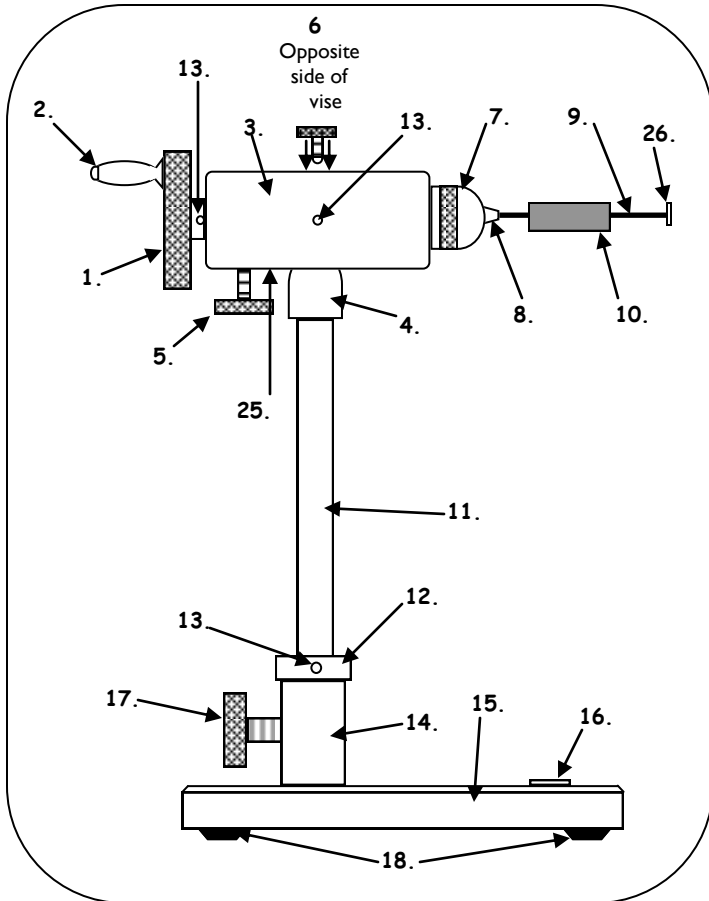




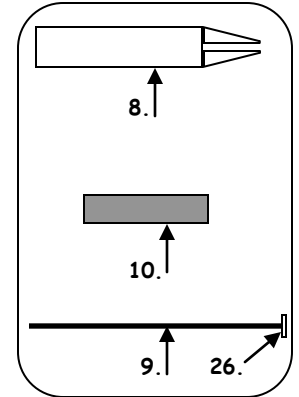
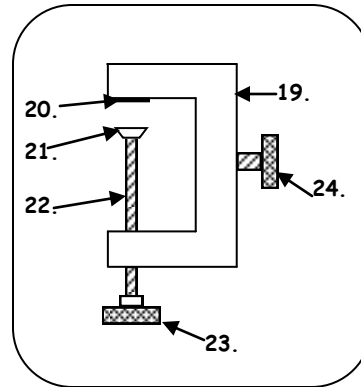
DYNA-KING, INC.®

World's finest handcrafted flytying vises

TUBE-FLY 2002



Clamp Base



PARTS LIST:

- | | |
|---|-------------------------|
| 1. Actuator | 14. Column |
| 2. Actuator Handle | 15. Large Pedestal Base |
| 3. Bearing housing | 16. Name Plate |
| 4. Shaft Adaptor | 17. Base Lock Screw |
| 5. Lock Screw | 18. Base Feet |
| 6. Tension Screw | 19. Large Clamp base |
| 7. Collet Nut | 20. Felt Pad |
| 8. Collet (2) | 21. Clamp Shoe |
| 9. Mandrel (2) | 22. Clamp Screw |
| 10. Tube (2) | 23. Clamp Handle |
| 11. Shaft | 24. Clamp Lock Screw |
| 12. Set collar-available on clamp models only | 25. Serial Number |
| 13. Set Screw (3) | 26. Mandrel Head (2) |

TO BEGIN TYING

First, select a MANDREL (#9) to fit the TUBE (#10) you will use. Slide the TUBE onto the MANDREL against the MANDREL head.

Remove the collet nut by unscrewing. Insert the appropriate COLLET (#8) into the vise as shown and replace the collet nut. Do not tighten.

Insert the end of the MANDREL protruding from TUBE piece into COLLET. While holding the TUBE piece firmly against the end of the vise, tighten the COLLET NUT (#7) lightly. Test the hold by pulling on the MANDREL head. Tighten only enough to secure the MANDREL and prevent the TUBE from rotating.

Tying Tip: If you are experiencing trouble with a TUBE rotating on the MANDREL, just dab a small amount of 5 minute epoxy just under the MANDREL head. Allow the glue to set up and dry thoroughly. This will give enough grip for the TUBE to stay stationary.

597 SANTANA DRIVE, UNIT A • CLOVERDALE, CA 95425, USA
(707) 894-5566 • FAX (707) 894-5990 • www.dyna-king.com • info@dyna-king.com